



# Shenzhen Sailwider Electronics Co., Ltd.

Unit Y-Z, 25th Floor, A Bldg., Fortune Plaza, No.7002 Shennan Road, Futian District, Shenzhen, China  
Tel: +86-755-82828526/82933134 Fax: +86-755-82933109 Email: info@sailwider.com

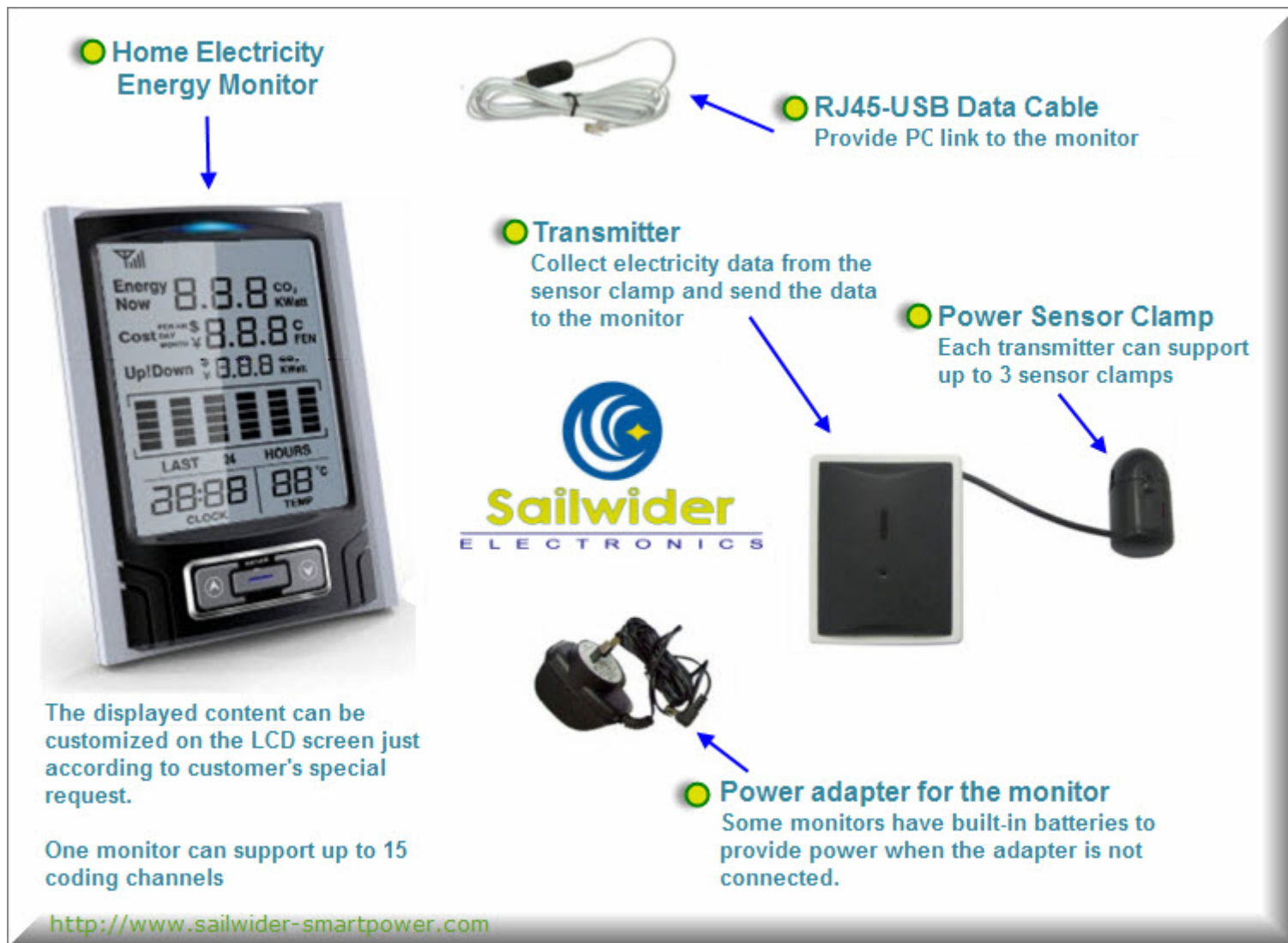
## Wireless Uni-directional (1-way) Home Electricity Energy Monitor

The uni-directional (1-way) electricity energy monitor is for simple monitoring purpose with low cost. It provides real-time, prompt and convenient feedback on electrical energy consumption. For more advanced and multi-functional home / office system with control function, please refer to our [bi-directional \(2-way\) electricity energy monitoring and control system](#). If you are looking for a powerful system for big projects or for engineering applications, then our [centralized electricity management system](#) should be your very right choice.

The wireless uni-directional (1-way) electricity energy saving monitor adopts 433MHz wireless transmission technology and can be used to monitor the energy-consuming conditions of one single energy-consuming unit or one master outlet that covers many electricity-consuming units. The monitor's easy-to-read LCD screen displays in real time the power consuming status and the carbon dioxide (CO<sub>2</sub>) correspondingly produced by the electricity consumed. It forecasts the electricity power cost of one hour, one day or one month for the monitored object. It also has the functions of time display, temperature display and humidity display.

Our energy monitors can be integrated with home solar monitoring function, which is a perfect and very useful [home solar monitoring solution](#) for homes installed with home solar plant.

### 1-way Energy Monitoring System Composition



The standard package of 1-way monitoring system simply consists one monitor (display unit) and one power transmitter which can support up to 3pcs sensor clamp, allowing it to monitor three-phase power supplies. A RJ45-USB data cable is available to provide PC link. The monitor (display unit) has 15 coding channels, it means it can support up to 15pcs power transmitters at the same time.





# Shenzhen Sailwider Electronics Co., Ltd.

Unit Y-Z, 25th Floor, A Bldg., Fortune Plaza, No.7002 Shennan Road, Futian District, Shenzhen, China  
Tel: +86-755-82828526/82933134 Fax: +86-755-82933109 Email: info@sailwider.com

The monitor can be placed anywhere in the house since it works wirelessly with the power transmitter. So put it where there is a wall socket and where you feel most convenient to watch the energy data on the LCD screen.

The monitor has a built-in battery box which can host 3pcs AAA batteries. When the outside power supply is cut off, the batteries inside the monitor will start to work automatically to provide power to the monitor. The batteries inside the monitor are only for temporary usage. The C batteries inside of the power transmitter can last for about 2 years.

The transmitter collects the electricity consuming data through the sensor clamps and sends the data to the monitor so that the required information can be displayed on the LCD screen. Fix the sensor clamp around the null wire or the live wire of the home meter or the monitored object, just as left photo is showing. After pairing of the power transmitter with the monitor, the system begins to work and start to monitor the electricity power consuming conditions of the monitored object in real time

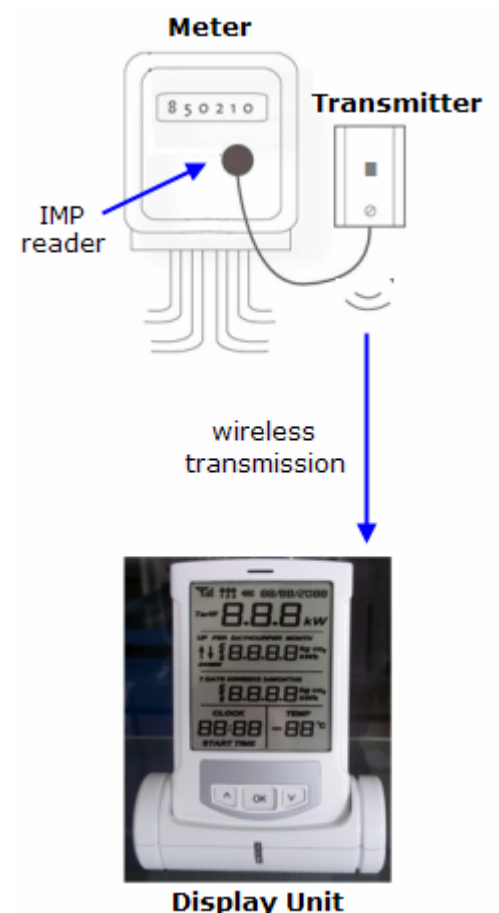


We have three kinds of optional sensor clamps for different diameters of cable 10mm, 18mm and 25mm



The transmitter can have up to 3pcs sensor clamps, supporting three-phase power supplies. The monitor has 15 coding channels and up to 15 transmitters can be monitored.

We have another type of 1-way energy monitor which use the LED IMP reader instead of the sensor clamp to collect data from the meter.





# Shenzhen Sailwider Electronics Co., Ltd.

Unit Y-Z, 25th Floor, A Bldg., Fortune Plaza, No.7002 Shennan Road, Futian District, Shenzhen, China  
Tel: +86-755-82828526/82933134 Fax: +86-755-82933109 Email: info@sailwider.com  
The LCD display screen of the uni-directional (1-way) electrical energy monitor works as below:

**Monitor LCD Screen**

The diagram illustrates the Monitor LCD Screen with the following fields and functions:

- Energy Now:** Displays current power and produced carbon dioxide (CO<sub>2</sub>) alternately. Unit: KWatt.
- Cost:** Forecast the cost of one hour, one day and one month alternately. Units: PER HR \$, DAY ¥, MONTH ¥, C, FEN.
- Up!Down:** Display the change of current power and produced carbon dioxide (CO<sub>2</sub>) alternately. Units: \$, ¥, CO<sub>2</sub>, KWatt.
- Histogram:** Display the power consuming conditions in histogram for the last 24 hours.
- LAST 24 HOURS:** A bar chart showing power consumption over the last 24 hours.
- CLOCK:** Display the current time.
- TEMP:** Display the indoor temperature.

**Above functions are just for reference. The displayed content can be customized according to customer's request.**

<http://www.sailwider-smartpower.com>

**Sailwider** is the original developer and manufacturer for the 1-way and 2-way electricity energy monitoring and control system. Our factory is ISO9001:2005, ISO/TS16949:2009, ISO14001:2009 and ISO/13485 2010 certified. If you are looking for a reliable supplier in this field, you really can't miss us. We are also working with big smart meter suppliers and solar inverter manufacturers to integrate our monitoring system into their products, thereby creating great values for our customers' products. We have strong R&D background and rich production experience to provide customized service for our customers. And we welcome OEM and ODM projects.

The 1-way system is also integrated by our customers with smart home system, smart meter system and solar inverter system, this is what we are doing for some world brands. Our R&D team is in a good position to work together with our esteemed customers for various [In-home Display \(IHD\)](#) integrations based on various communication interfaces (such as RS-232, RS-485 and etc.) and different communication protocols, including 433MHz, Mbus, ZigBee, and etc.

You may send us your own appearance design and tell us what you want to display on the LCD screen for the wireless energy monitor, then you'll get your ideal products from **Sailwider**, your most reliable manufacturer and developer from China.



## System Specification

Remarks: The specification can be customized according to customer's special request.



# Shenzhen Sailwider Electronics Co., Ltd.

Unit Y-Z, 25th Floor, A Bldg., Fortune Plaza, No.7002 Shennan Road, Futian District, Shenzhen, China  
Tel: +86-755-82828526/82933134 Fax: +86-755-82933109 Email: info@sailwider.com

Portability of the Monitor	Portable, with built-in battery
With DC Power Adapter	Yes
Wireless Transmission	Yes
Indoor Minimum Covering Distance (over partitions)	30m
Easy to read LCD screen	Yes
PC Link	Yes, with RJ45 to USB data cable
PC Software	Yes
Compatibility with 2-phase or 3-phase	Yes
Supported transmitter qty.	15pcs
Supported sensor clamps qty. per transmitter	3pcs
Supported coding channels	15
Transmitter Battery Life	2 years
Signal Interval	8 seconds
Displayed Cost Currencies	£, Euro, \$
Maximum Monitoring Input Current	60A or 100A
Minimum Monitoring Input Current	0.2A
Cost Forecast Instant View	Hour/Day/Month
Memory function	Yes
History Data View	Yes
Temperature Display	Yes



**All products are under patent protection. All rights reserved.**

Unit Y-Z, 25th Floor, A Bldg., Fortune Plaza, No.7002 Shennan Road, Futian District, Shenzhen, China  
Tel: +86-755-82828526/82933134 Fax: +86-755-82933109 Email: info@sailwider.com